



# Roxtec SFHM transit with SE PPS

Transit for multiple plastic pipes.

The Roxtec SE PPS with SFHM is an extension of a standard Roxtec transit for protection of multiple plastic pipe penetrations against the risk of fire. The seal allows for a mix of pipe materials (metal and plastic) and in some cases cables within the same opening. The SFHM frame with sealing strip is for bolting to the structure. The standard sealing modules are adaptable to cables and pipes of different sizes, and can be used to build in spare capacity in the transit.



- Easy to maintain and inspect

### Product characteristics



Fire rated



Watertight



Gas-tight

### Structure of installation



Metal

### Mounting type



Bolting

## Ratings & certificates

### Fire

- A-CLASS according to IMO 2010 FTP Code

### Tightness

- Gas: 2.5 bar (catastrophic)
- Water: 4 bar (catastrophic)

## Frame dimensions

in/lbs

The frame variants below are a limited selection. For the full range of frames and configurations, please visit [roxtec.com](https://www.roxtec.com).

Product	Frame openings	Packing space	External dimensions WxHxD	Aperture dimensions w x h	Weight	Art. no
SFHM 6x1 ALU INCL TSL 15x6	1	4.724 x 7.087	10.256 x 14.094 x 2.362		6.1	5SFHM00008469
SFHM 6x2 ALU INCL TSL 15x6	2	4.724 x 7.087	15.394 x 14.094 x 2.362		6.2	5SFHM00008461
SFHM 6x3 ALU INCL TSL 15x6	3	4.724 x 7.087	20.531 x 14.094 x 2.362		11.8	154739
SFHM 6x1 PRIMED INCL TSL 15x6	1	4.724 x 7.087	10.256 x 14.094 x 2.362		17.9	5SFHM00009087
SFHM 6x2 PRIMED INCL TSL 15x6	2	4.724 x 7.087	15.394 x 14.094 x 2.362		26	120964
SFHM 6x3 PRIMED INCL TSL 15x6	3	4.724 x 7.087	20.531 x 14.094 x 2.362		33.7	123095
SFHM 6x1 AISI316 INCL TSL 15x6	1	4.724 x 7.087	10.256 x 14.094 x 2.362		17.7	5SFHM00007863
SFHM 6x2 AISI316 INCL TSL 15x6	2	4.724 x 7.087	15.394 x 14.094 x 2.362		25.3	5SFHM00009102
SFHM 6x3 AISI316 INCL TSL 15x6	3	4.724 x 7.087	20.531 x 14.094 x 2.362		32.9	5SFHM00007864

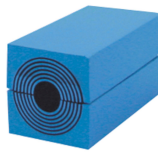


# Sealing components

## Sealing components



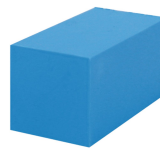
Lubricant



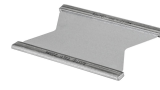
RM module with  
Multidiameter™



Wedge & Wedgekit



RM solid compensation  
module



Stayplate



SE PPS extension frame



Holder tools



Sealing kit

## Accessories

For detailed information, please visit [roxtec.com](https://www.roxtec.com).

The product information provided by Roxtec does not release the purchaser of the Roxtec system, or part thereof, from the obligation to independently determine the suitability of the products for the intended process, installation and/or use.

Roxtec gives no guarantee for the Roxtec system or any part thereof and assumes no liability for any loss or damage whatsoever, whether direct, indirect, consequential, loss of profit or otherwise, occurred or caused by the Roxtec systems or installations containing components not manufactured by an authorized manufacturer and/or occurred or caused by the use of the Roxtec system in a manner or for an application other than for which the Roxtec system was designed or intended.

Roxtec expressly excludes any implied warranties of merchantability and fitness for a particular purpose and all other express or implied representations and warranties provided by statute or common law. User determines suitability of the Roxtec system for intended use and assumes all risk and liability in connection therewith. In no event shall Roxtec be liable for indirect, consequential, punitive, special, exemplary or incidental damages or losses.

The Roxtec products are offered and sold in accordance with the conditions of the Roxtec General Terms of Sales. The latest version of the Roxtec General Terms of Sales can be downloaded from <https://www.roxtec.com/en/about-us/about-roxtec/general-terms-of-sales/>

We reserve the right to make changes to the product and technical information without further notice. Any errors in print or entry are no claims for indemnity. The content of this publication is the property of Roxtec International AB and is protected by copyright.

This document was generated on: 2024-04-27